



Andy Beshear  
GOVERNOR

## TRANSPORTATION CABINET

200 Mero Street  
Frankfort, Kentucky 40601

Jim Gray  
SECRETARY

November 14, 2023

CALL NO. 112  
CONTRACT ID NO. 232954  
ADDENDUM # 2

Subject: Trimble County, FBP 4201(088)  
Letting November 16, 2023

(1) Revised/Added - Special Notes - Pages 20, 36a-36b, 58-62 of 159

Proposal revisions are available at <http://transportation.ky.gov/Construction-Procurement/>.

If you have any questions, please contact us at 502-564-3500.

Sincerely,

Rachel Mills,

A handwritten signature in cursive script that reads "Rachel Mills".

Rachel Mills, P.E.  
Director  
Division of Construction Procurement

RM:mr  
Enclosures

**SPECIAL NOTES FOR  
BRIDGE DECK RESTORATION AND WATERPROOFING**

GENERAL NOTES

SPECIAL NOTE FOR TRAFFIC CONTROL ON BRIDGE REPAIR CONTRACTS

SPECIAL NOTE FOR 3/8" EPOXY-URETHANE WATERPROOFING OVERLAY  
FOR BRIDGE DECKS

SPECIAL NOTE FOR JOINT SEAL REPLACEMENT

SPECIAL NOTE FOR MIGRATORY BIRD PROTECTION

## SPECIAL NOTE FOR JOINT SEAL REPLACEMENT

- I. DESCRIPTION.** Perform all work in accordance with the Kentucky Transportation Cabinet, Department of Highway's 2019 Standard Specifications for Road and Bridge Construction and applicable Supplemental Specifications, the Standard Drawings, this Note, and the attached detail drawings. Section references are to the Standard Specifications.

This work consists of the following: (1) Furnish all labor, materials, tools, and equipment; (2) Remove existing bridge joint seals; (3) Install new joint seals; (4) Maintain and control traffic; (5) Any other work specified as part of this contract.

All construction will be in accordance with Section 606 unless otherwise specified.

**II. MATERIALS.**

**A. Joint Seal.** It shall have a cellular, or micro-cell, polyurethane foam impregnated with a hydrophobic acrylic emulsion, or a hydrophobic polymer. The polyurethane foam external facing shall be factory coated and cured with highway-grade, fuel resistant silicone or a highway-grade elastomeric coating at a width greater than the maximum joint expansion.

**III. CONSTRUCTION.**

**A. Remove Existing Materials.** Remove existing joint seal as shown on the attached sketches. Remove debris and/or expansion joint filler as directed by the Engineer.

Dispose of all removed material entirely away from the job site. This work is incidental to the contract unit price for "Joint Seal Replacement".

**B. Joint Seal.** Seal shall be installed in accordance with manufacturer's recommendations concerning approved adhesives, welds between sticks and appurtenances, and adhesion to concrete deck or armored edges. Joint seal is to be installed 1/2" recessed from the surface.

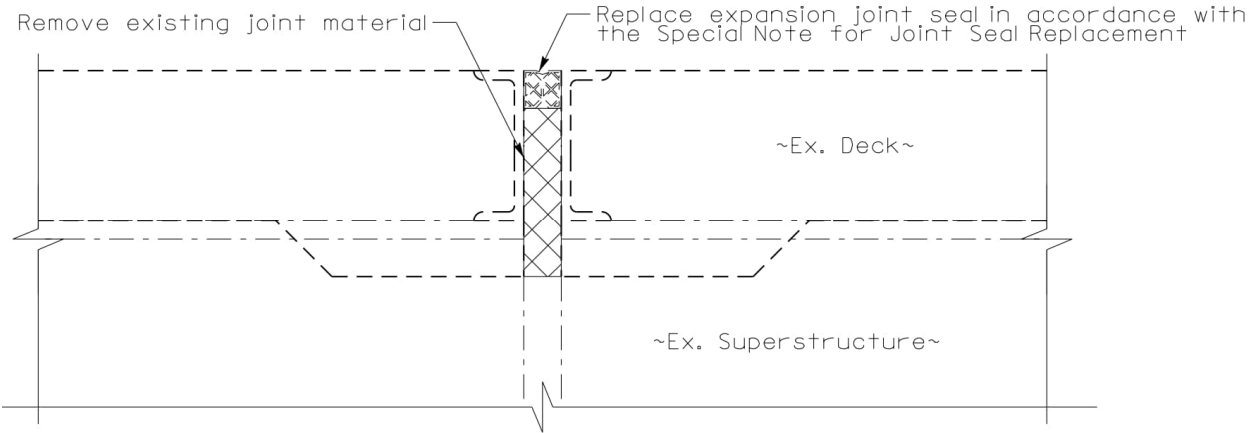
**C. Shop Plans.** Shop plans will not be required. The Contractor is responsible for obtaining field measurements and supplying properly sized materials to complete the work.

**IV. MEASUREMENT.**

**A. Joint Seal Replacement.** The Department will measure the quantity in linear feet from gutterline to gutterline along the centerline of the joint.

**V. PAYMENT.** See Section 606 and the following:

**A. Joint Seal Replacement.** Payment at the contract unit price per linear foot is full compensation for removing specified existing materials, furnishing and installing joint seal and all incidental items necessary to complete the work within the specified pay limits as specified by this note and as shown on the attached detail drawings.



**KENTUCKY TRANSPORTATION CABINET  
DEPARTMENT OF HIGHWAYS  
BRIDGE REHABILITATION PLANS  
ITEM NO. 5-10107**

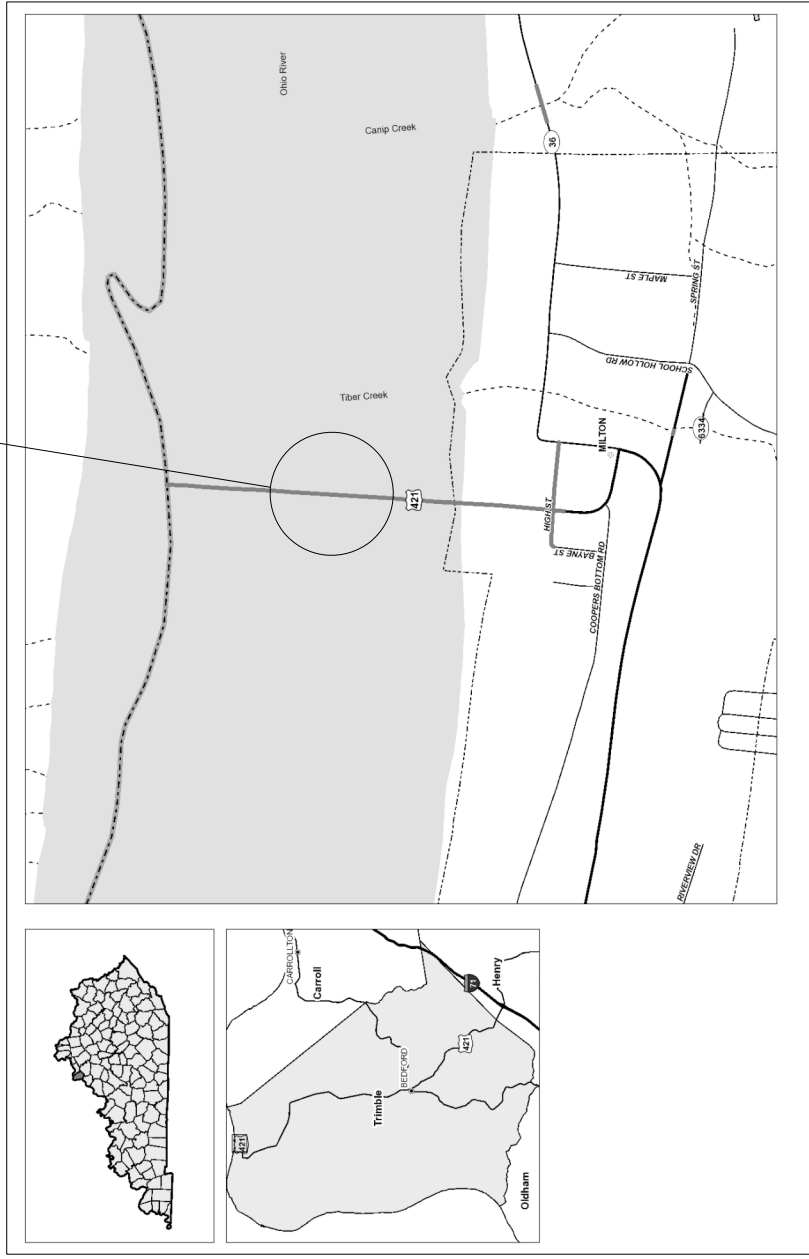
**INDEX OF SHEETS**

SHEET NO.	DESCRIPTION
1	TITLE & LOCATION MAP
2	LAYOUT & EPOXY OVERLAY
3	DRILLED DRAIN HOLE LOCATIONS
4	DRILLED DRAIN HOLE DETAILS
5	US2 DOWNSTREAM BOLT REPLACEMENT

**SPECIAL NOTES**

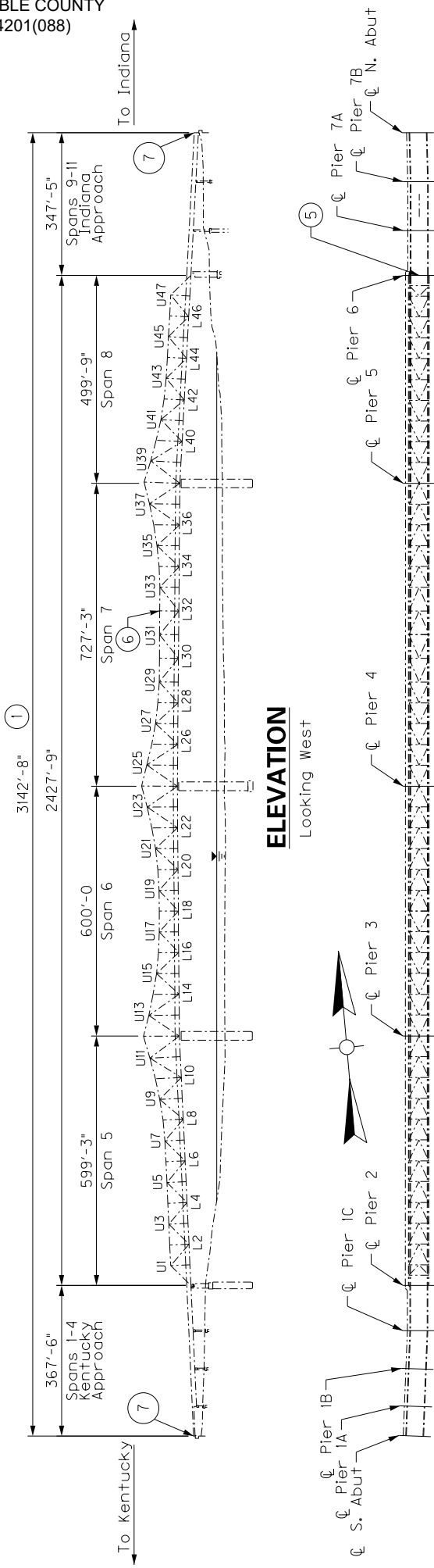
- GENERAL NOTES FOR TRAFFIC CONTROL ON BRIDGE REPAIR CONTRACTS
- SPECIAL NOTE FOR 3/8 EPOXY-URETHANE WATERPROOFING OVERLAY FOR BRIDGE DECKS
- SPECIAL NOTE FOR STRUCTURE REMOVAL AND RENOVATIONS
- SPECIAL NOTE FOR MIGRATORY BIRD PROTECTION
- SPECIAL NOTE FOR JOINT SEAL REPLACEMENT

112B00040N  
MILTON MADISON BRIDGE  
US-421 OVER THE OHIO RIVER  
38.72861, -85.370

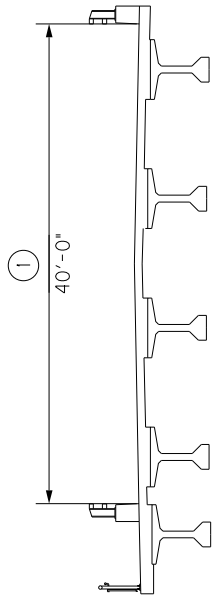


**LOCATION MAP**

ROUTE <b>US 421</b> CROSSING <b>OHIO RIVER</b>	COUNTY <b>TRIMBLE</b> STRUCTURE NAME <b>112B00040N</b>	<b>TITLE &amp; LOCATION MAP</b>	PREPARED BY <b>AECOM</b>	JUNE 1, 2023 SHEET 01 OF 05
---	---	---------------------------------	-----------------------------	-----------------------------------

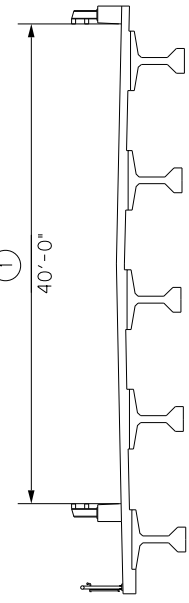


**PLAN**



**TYPICAL KENTUCKY APPROACH SECTION**

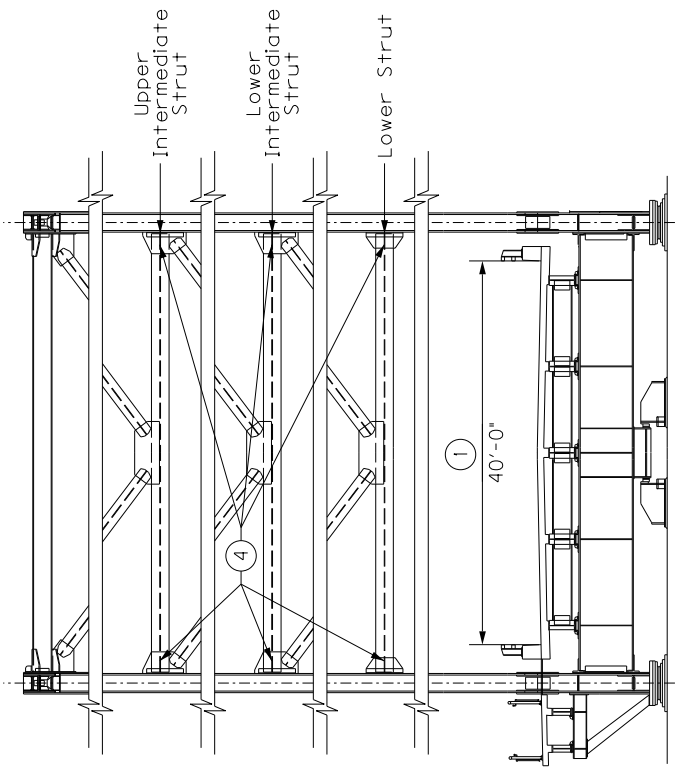
Looking North



**TYPICAL INDIANA APPROACH SECTION**

Looking North

- ① Place epoxy overlay in accordance with the Special Note For 3/8" Epoxy-Urethane Waterproofing Overlay for Bridge Decks.
- ④ Drilled drain hole, see Sheets 3 and 4.
- ⑤ Damaged finger joint repair, see Sheet 4 and General and Special Notes.
- ⑥ Bolt Replacement, see General and Special Notes.
- ⑦ Pourable Joint Seal Replacement, see Special Notes.



**TYPICAL TRUSS SECTION AT PIER**

Looking North

JUNE 1, 2023  
SHEET  
02 OF 05

PREPARED BY  
**AECOM**

**LAYOUT & EPOXY OVERLAY**

COUNTY  
**TRIMBLE**  
STRUCTURE NAME  
**112B00040N**

ROUTE  
**US 421**  
CROSSING  
**OHIO RIVER**

DRILLED DRAIN HOLE LOCATIONS

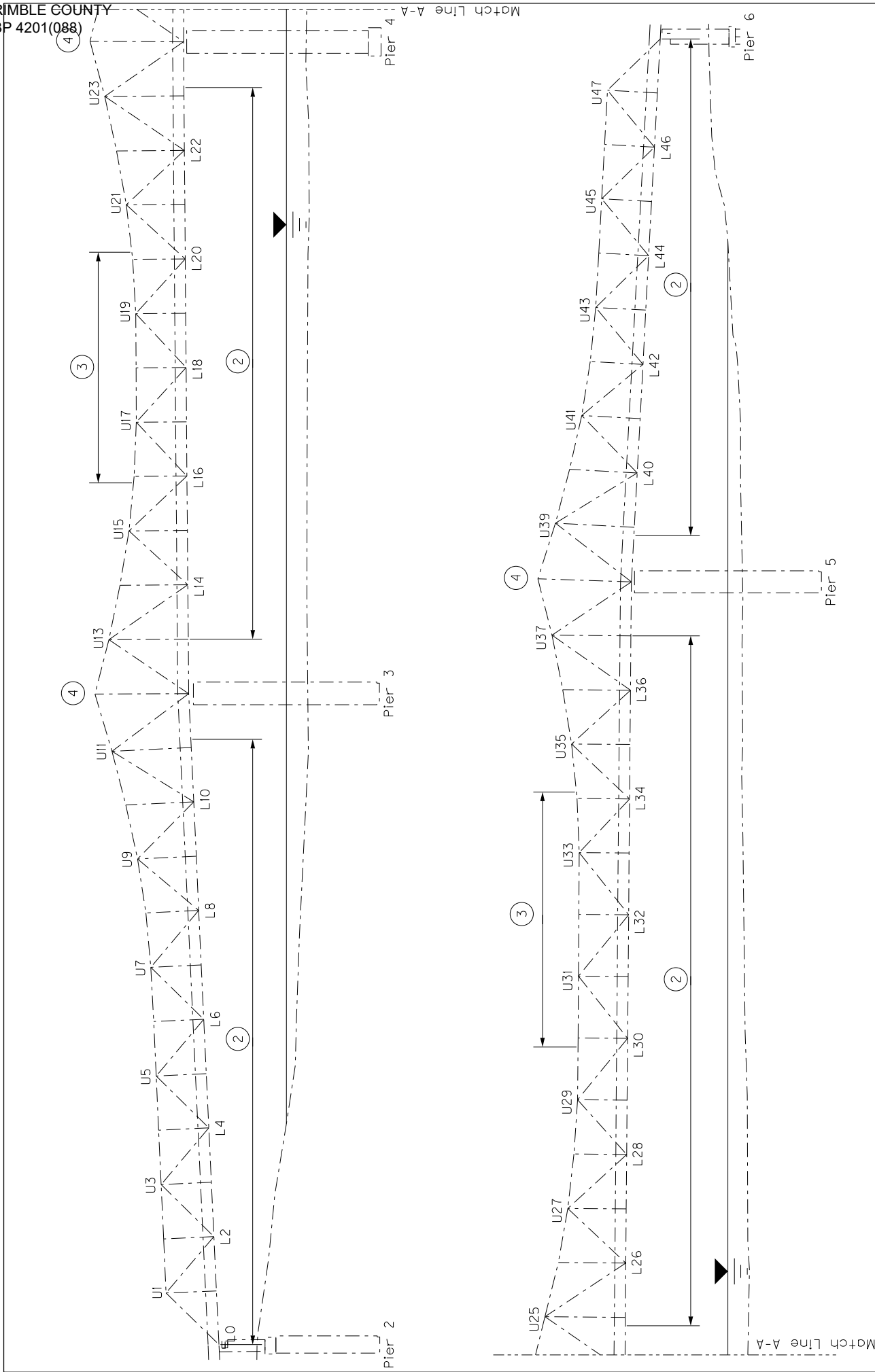
COUNTY  
TRIMBLE  
STRUCTURE NAME  
112B00040N

ROUTE  
US 421  
CROSSING  
OHIO RIVER

② 2" diameter hole in uphill side of connection in lower chord web (see Lower Chord Drilled Hole Detail on Sheet 4, 96 EA).

③ 2" diameter hole in uphill side or both sides of connection in upper chord web (see Upper Chord Drilled Hole Detail on Sheet 4, 32 EA).

④ 2" diameter hole in portal frame strut web near connection to upstream and downstream truss (see Portal Frame Drilled Hole Detail on Sheet 4, 18 EA).

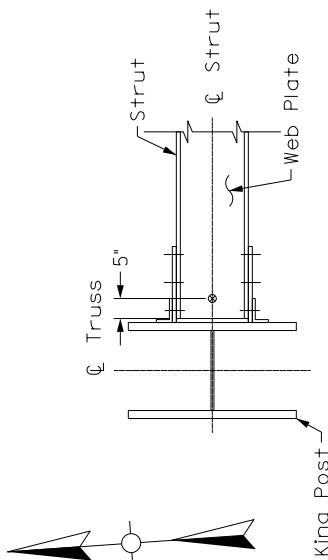


Match Line A-A

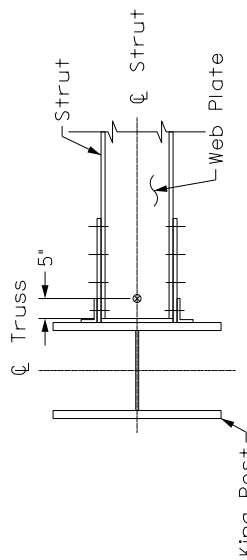
Match Line A-A



⑤ Damaged Finger Joint Repair  
Pier 6 Finger Joint: Grind the top of damaged fingers to provide smooth transition throughout joint prior to placing overlay.



Lower Strut  
PP12, PP24, PP38



Upper Intermediate Strut and Lower Intermediate Strut  
PP12, PP24, PP38

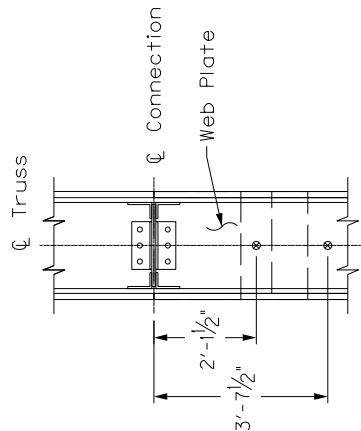
④ Portal Frame Drilled Hole Detail

JUNE 1, 2023  
SHEET  
04 OF 05

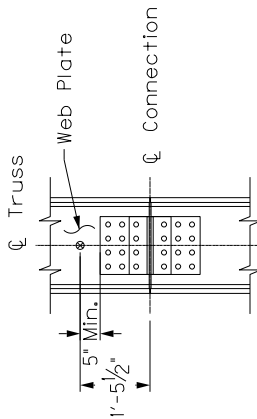


PREPARED BY

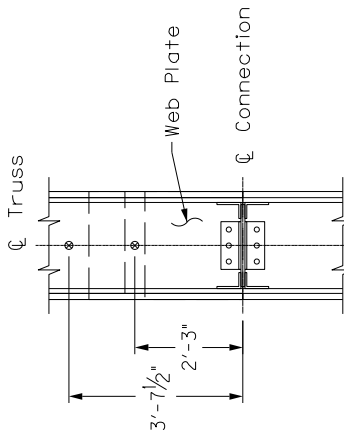
**DRILLED DRAIN HOLE DETAILS**



L48



L1-L11, L13-L23  
(Opposite Hand L25-L37, L39-L47)

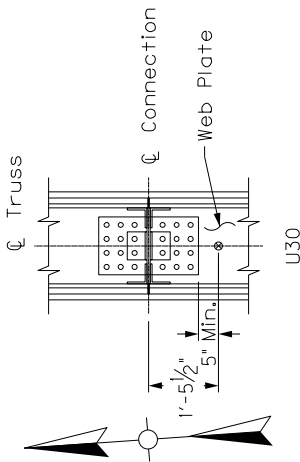


L0

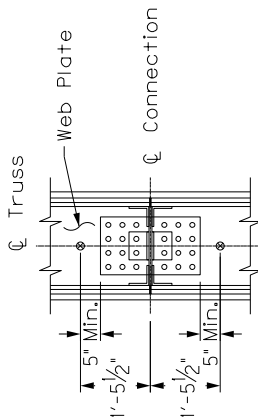
② Lower Chord Drilled Hole Detail

Legend

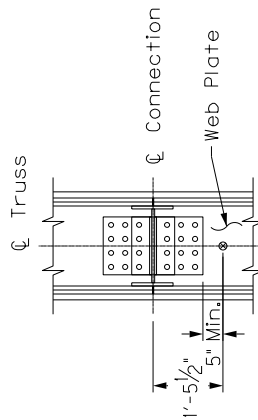
⊙ Location of 2" diameter drilled hole.



U30



U17-U19, U31-U33



U16  
(Opposite Hand - U20, U34)

③ Upper Chord Drilled Hole Detail

COUNTY  
**TRIMBLE**  
STRUCTURE NAME  
**112B00040N**

ROUTE  
**US 421**  
CROSSING  
**OHIO RIVER**

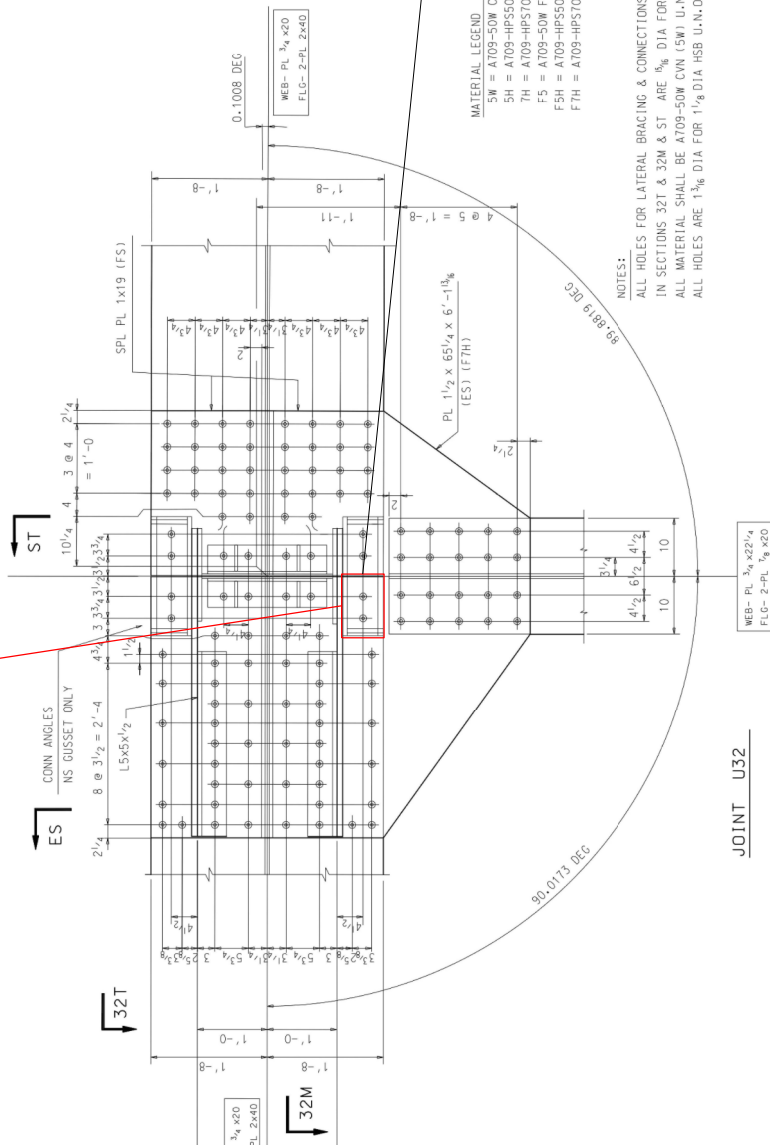
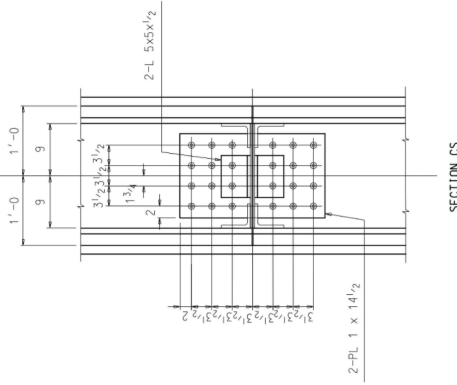
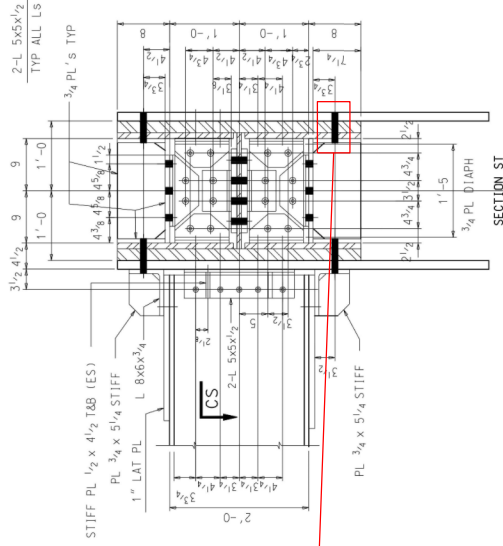
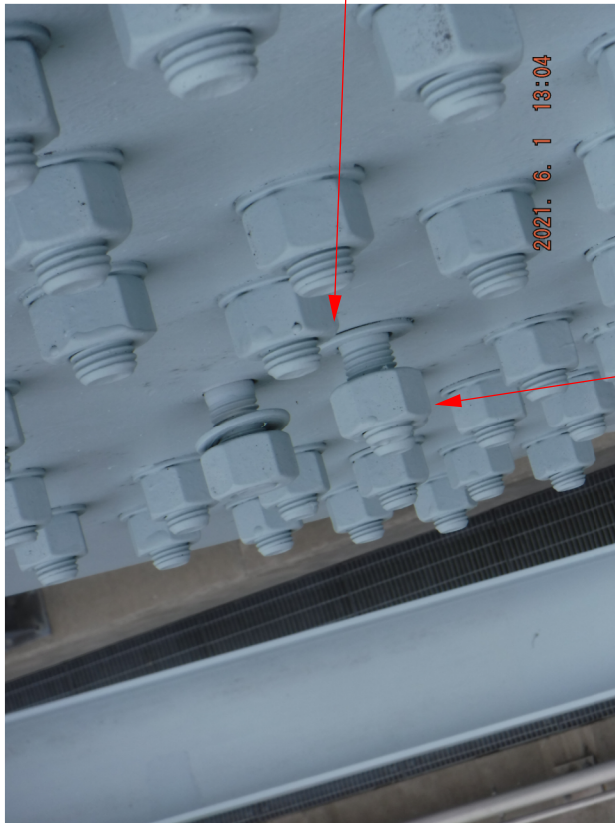


**U32 DOWNSTREAM BOLT REPLACEMENT**

COUNTY  
**TRIMBLE**  
STRUCTURE NAME  
**112B00040N**

ROUTE  
**US 421**  
CROSSING  
**OHIO RIVER**

JOINT U32



Remove and replace existing bolts with new A325 bolts

- MATERIAL LEGEND**
- SW = A109-50W CWN
  - SH = A109-HPSS0W CWN
  - TH = A109-HPST0W CWN
  - FS = A109-50W FCM
  - FH = A109-HPSS0W FCM
  - FTH = A109-HPST0W FCM

**NOTES:**

- ALL HOLES FOR LATERAL BRACING & CONNECTIONS IN SECTIONS 32T & 32M & ST ARE 5/8\"/>